



HEALTH, SAFETY & ENVIRONMENT (HSE) POLICY

B.P.Enterprise is committed to protect the health and safety of everyone involved in its operations, and the sustainability of the environment in which it operates. We shall strive for continual improvement and the adoption of international codes and standards where practicable.

In order to honour the aforesaid commitments, B.P.Enterprise will implement systems in its operations that accord with the requirements of health, safety and environmental standards and strive to:

- Ensure that all our operations comply with applicable health, safety and environmental laws and regulations,
- Identify hazards, assess the risks and implement appropriate controls to protect all personnel involved in our activities and to prevent environmental pollution,
- Set objectives and targets for improving health, safety and environmental performance, monitor and report openly on its performance,
- Provide health, safety and environmental training to all B.P.Enterprise's employees in India and a broad and actively promote awareness of health, safety and environmental issues across the organization,
- Ensure that contractors, service providers and consultants are aware of B.P.Enterprise' policies and standards and where necessary, work with them to raise their standards to meet our requirement.
- Foster a culture where accidents, incidents and near misses are promptly reported and investigated and the lessons learned are shared throughout the organization,
- Ensure that high priority is placed on emergency preparedness and contingency planning, and regular testing of systems, so that all incidents are responded to in a timely and effective manner,
- Monitor our performance and conduct regular reviews to ensure our policies and controls are effective and that our health safety and environment aspirations are being achieved,
- Work with government and regulatory bodies in the formulation / improvement of laws, policies, regulations and procedures aimed at protecting health, safety and environment,
- Consult with and respond to the concerns of other stakeholders from time to time on health, safety and environmental performance.
- Integrate HSE into business planning and provide adequate resources.

Each and every employee, contractor, service provider and consultant of B.P.Enterprise or its subsidiaries in India and abroad is obliged to comply with these principles.

Kalyan Sinha Roy
Proprietor

Date- April-2017



HSE Manual

The HSE Manual is issued for BPE employees' and sub-contractors' guidance. It highlights the assurance of implementation of HSE Policy and the HSE Management System in a frame work focused towards meeting Client(s) HSE requirement, with the following objectives:

- Provide an approach of avoiding and preventing incidents to personnel, damage to property and environment through good HSE performance and that all activities are conducted in line with HSE requirements.
- Assist in ensuring the adherence with HSE regulations and legislations.
- Support BPE Teams in implementing the Health, Safety & Environment Management System (HSEMS) and achieving their set HSE targets.

It is well known to our employees/subcontractors that elimination of any potential hazard should be achieved by applying the appropriate risk assessment studies and the developing of an action plan.

The manual comprises three sections:

1. Safety
2. Health
3. Environment

To our best HSE knowledge and best safety practices, each of the above sections consist of many parts which cover all areas based on our activities and client needs.

(ITEMS : 1.3)

HSE Objectives & Targets

1. To Ensure that all personnel conduct their work according to OWNER'S HSE policy.
2. To prepare HSE documents in line with OWNER's current Health Safety and environment Management System, Standard specification for HSE Management at construction site
3. To ensure that all our employees adopt OWNER's HSE requirements, to protect people, work and equipment and minimize impact on the Environment.
4. Provide a suitable & sufficient First Aid Facility .
5. Provision of a suitable and Healthy working Environment for the Workforce.
6. Ensure that the entire workforce that will be involved in the project are physically and mentally fit for the works attend all times.

(ITEMS : 3.1)

HAZARD-RISK IDENTIFICATION & SITE HSE PLAN

The Identification of Hazards, accidents scenarios and consequences will be carried out systematically using well defined methods and procedures. The process will start at earliest stage in the construction activities (pre-mobilization), Process or task to allow good Health, Safety, environment, and security practices to be integrated.

Risk control measures include both those to eliminate or prevent incidents . wherever possible and practicable , must be given to elimination and prevention rather than cure through inherently Safe Design. The identification of risk control measures is an interactive process that requires potential solutions to be fed back into the assessment process in order to re value the risk.

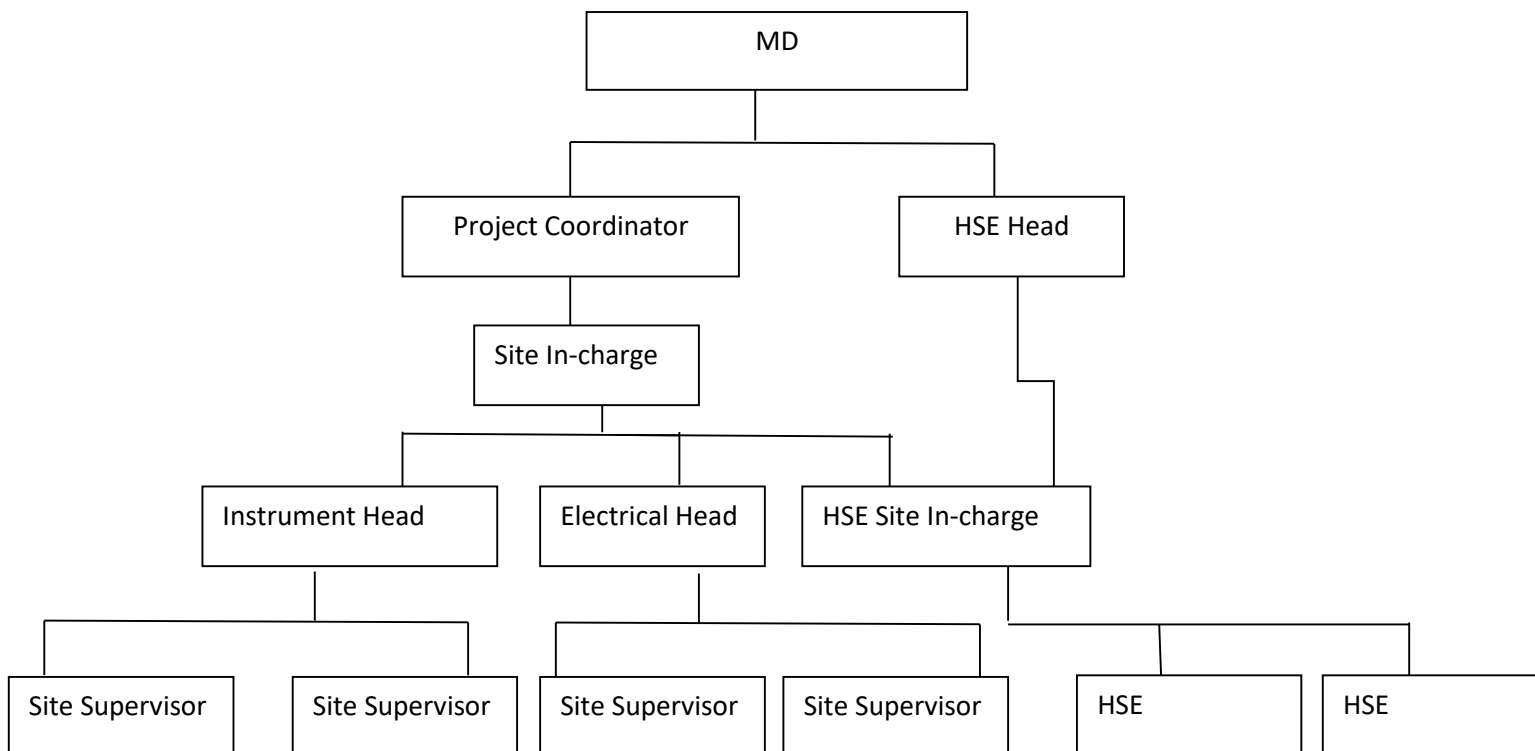
(ITEMS : 5.1)

DOCUMENTATION AND COMMUNICATION

Records are to support contractors HSE compliance for controls and audit purpose. We will conduct daily tool box meeting in the morning before beginning of job and get it signed by the workmen and submit to the client HSE office, Haldia. We have to maintain proper hot , cold and height work permits signed from the respective officers and engineers.

(ITEMS : 6)

HSE ORGANISATION ROLES & RESPONSIBILITIES



(ITEMS : 7.1)

HSE RECRUITMENT AND TRAINING

Orientation / Induction Training given to all workers, vendors and visitors entering the construction area, in accordance with the HSE Training Program. Following this training, each person will, as a minimum, have the following knowledge:

- ✓ Different types of Alarm signals and their meaning
- ✓ Location and routes to the nearest muster area
- ✓ Location of emergency equipment
- ✓ Responsibilities of each individual
- ✓ Notification and reporting requirements

(ITEMS : 8.3)

MOTIVATION, INCENTIVE AND DISCIPLINE

To Motivate and create Positive Safety culture among site employees we shall develop incentive schemes and award procedures to the best safety employee as well strict disciplinary action to be taken against person violating our safety rules.

(ITEMS : 8.4)

RECEIVED PREFORMANCE AWARDS



HSE MOTIVATIONAL
PROGRAM ON 18-10-2017
FOR THE MONTH OF OCTOBER 2017
LTHE (CS) CDSP HALDIA PROJECT



CDSP, Aishwarya Project IOCL Haldia Refinery

BEST SUB-CONTRACTOR FOR MONTH OF SEPTEMBER 2017



Award being conferred by Mr. Joydeep Roy in presence of RCM and other head to M/s. B P ENTERPRISE



L&T Hydrocarbon Engineering

Coke Drum System Package (CDSP) Aishwarya Project
Haldia Refinery, West Bengal



Certificate of Excellence

This is to certify that M/s. M/S. B P ENTERPRISE

deployed as SUB-CONTRACTOR is judged as the "Best

Safety Conscious" Staff / Supervisor / Worker for the Month of

SEPTEMBER 2017, ACHIEVED AUDIT SCORE 81%.

Ananta
(A. Chatterjee)
HSE In-Charge

[Signature]
Resident Construction Manager